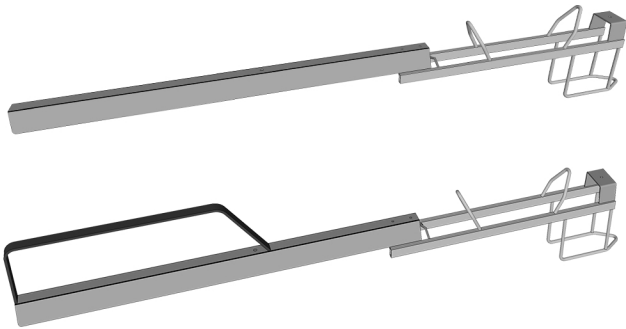
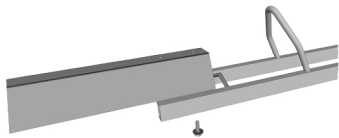


## TRAY ASSEMBLY (HIGH and LOW TRAYS)

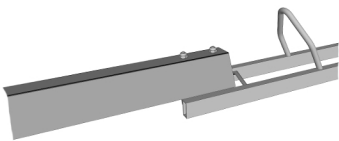


Locate the Stanchions and Trays.

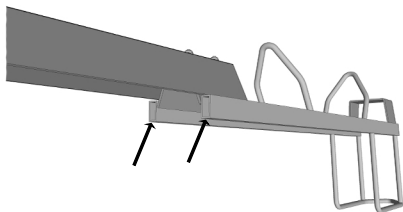
Flip a Stanchion and Tray upside down. Align the 2 holes in the Stanchion with the 2 holes in the Tray. The Tray should be on the outside of the Stanchion, as shown.



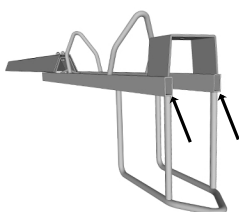
Place a 1/4" washer over a 1/4" x 3/4" Bolt. Insert the assembly through one of the holes. Tighten loosely with a 1/4" Washer and 1/4" Stopnut.



Repeat in the open hole, as shown. Tighten using (2) 7/16" Wrenches.



Insert (2) 1/2" x 1" Plugs into the open holes in the front of the Stanchion, as shown.



Insert (2) 1/2" x 1" Plugs into the back of the Stanchion, as shown.

Your tray is now complete!

