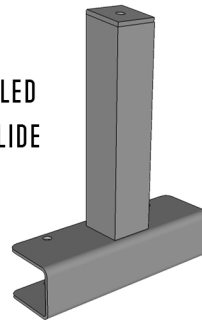


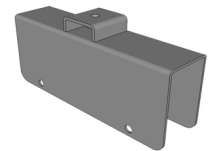
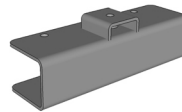
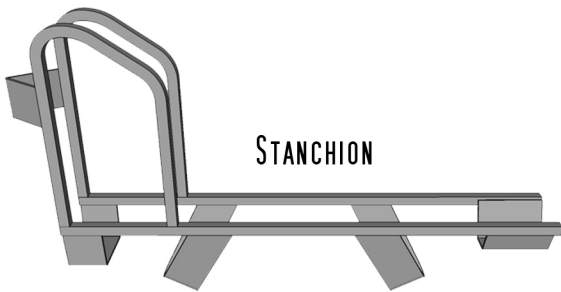
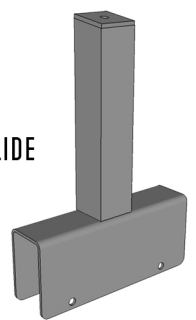
CONDO WALL DOUBLE DECKER - PARTS LIST



HIGH ANGLED CONDO SLIDE



LARGE HIGH ANGLED CONDO SLIDE



TRAY



HARDWARE:

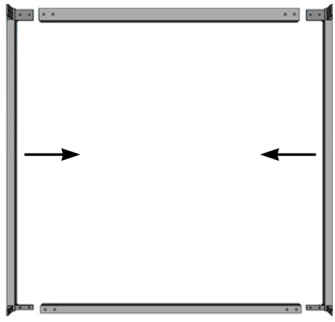
5/16" x 1/2" BOLTS
 5/16" WASHERS
 1/4" x 3/4" BOLTS
 1/4" NYLON STOPNUTS

1" BLACK PLUGS
 1/4" BLACK PLUGS
 RUDY RACK STICKER

SLIDE SPACING

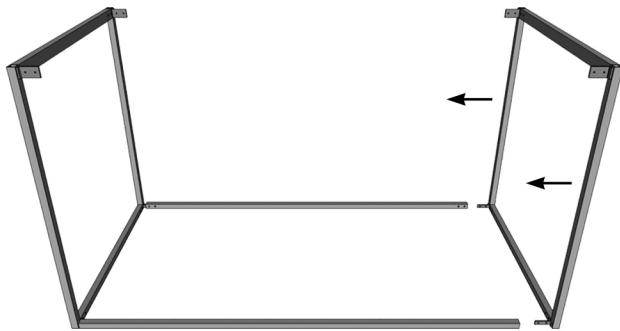
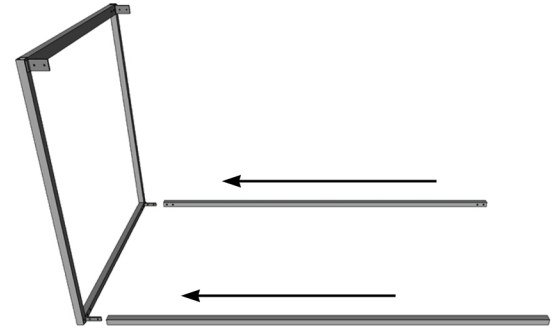
RAIL LENGTH	FROM END OF RAIL	BETWEEN SLIDES
82"	3 7/8"	7 5/8"
95"	3 3/4"	7 1/2"
108"	3 3/4"	7 1/2"

CONDO WDD - ASSEMBLY INSTRUCTIONS



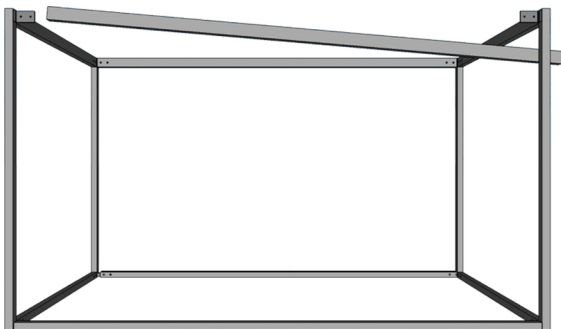
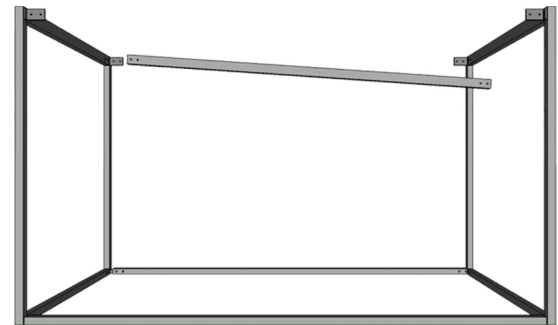
1.
LOCATE TWO CORNER POSTS AND ONE BOTTOM CROSS BAR AND ONE TOP CROSSBAR. LAY THE PARTS ON A FLAT SURFACE INSERTING THE EARS ON THE CORNER POSTS INTO THE CROSS BARS AS SHOWN IN THE DIAGRAM TO THE LEFT. SECURE USING 5/16" x 1/2" BOLTS AND 5/16" WASHERS. REPEAT THIS PROCESS AGAIN WITH THE REMAINING CROSSBARS AND CORNERS POSTS TO CREATE ANOTHER END ASSEMBLY.

2.
LOCATE YOUR TWO BOTTOM RAILS. WHILE HOLDING YOUR END ASSEMBLY UPRIGHT (SMALL EARS ON THE BOTTOM), SLIDE THE ENDS OF THE RAILS OVER THE EARS AS SHOWN IN THE DIAGRAM TO THE RIGHT. SECURE USING 5/16" x 1/2" BOLTS AND 5/16" WASHERS.



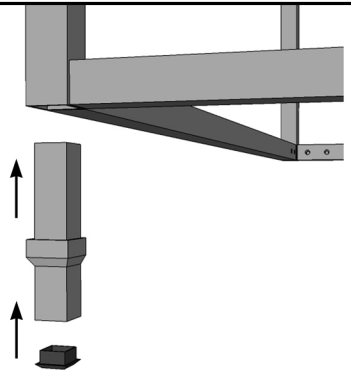
3.
NEXT YOU WANT TO MIRROR THIS PROCESS USING THE REMAING END ASSEMBLY. SECURE USING 5/16" x 1/2" BOLTS AND 5/16" WASHERS.

4.
LOCATE A TOP RAIL. SLIDE ONE END OF THE TOP RAIL OVER ONE OF THE EARS ONE THE CORNER POST WHILE NEGOTIATING THE OTHER END OVER THE CORRESPONDING EAR ON THE OTHER END OF THE RACK. NOTE: IT MAY TAKE A LITTLE FORCE TO GET THE ONTO BOTH EARS. SECURE USING 5/16" x 1/2" BOLTS AND 5/16" WASHERS

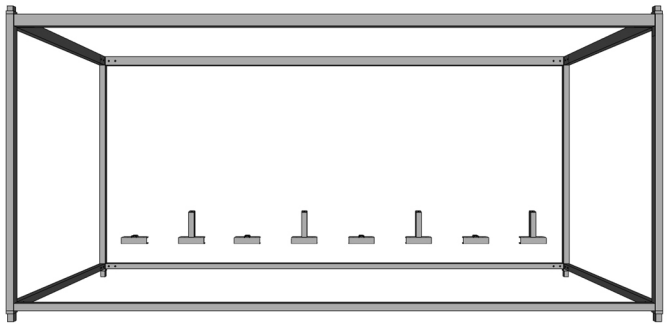


5.
REPEAT STEP 4 WITH THE REMAINING TOP RAIL.
NOW YOUR STRUCTURE IS COMPLETE.
SOME BOLTS MAY HAVE LOOSENED DURING THE ASSEMBLY. GO BACK AND MAKE SURE ALL BOLTS ARE TIGHT BEFORE MOVING ON.

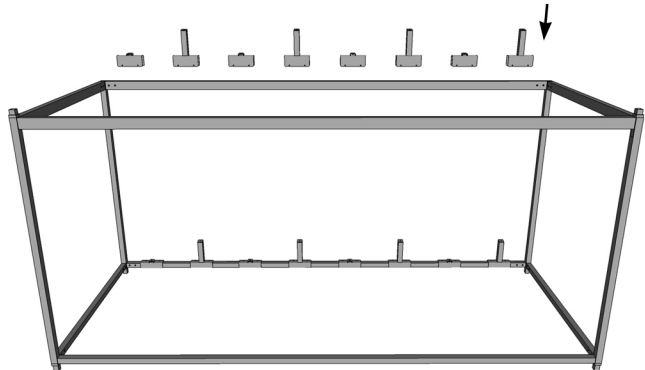
CONDO WDD - ASSEMBLY INSTRUCTIONS



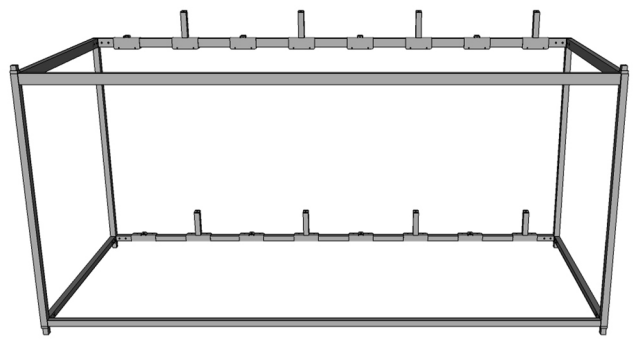
6
 LOCATE CONDO RACK FEET (4), AND BLACK 1" PLUGS (4). PUSH A 1" BLACK PLUG INTO EACH OF THE FEET AS SHOWN TO THE LEFT. ONCE THE FEET HAVE PLUGS IN THEM, GO AROUND YOUR STRUCTURE LIFTING EACH CORNER AND SLIDING THE SIDE WITHOUT THE WELD OF THE SAFTY STOP INTO THE VERTICAL TUBE OF THE CORNER POSTS AS SHOWN IN THE DIAGRAM ON THE LEFT.



7.
 LOCATE THE SMALL (BOTTOM) SLIDES, SLIDE THEM OVER THE BOTTOM RAIL AT THE REAR OF THE RACK. STARTING AT ONE END WITH A SMALL LOW SLIDE AND ALTERNATING LOW, HIGH, LOW ALONG THE RAIL AS SHOWN IN THE DIAGRAM TO THE RIGHT. SPACE THE SLIDES ACCORDING TO THE TABLE ON THE BOTTOM OF PAGE 1 (PARTS PAGE) SECURE USING 1/4" x 3/4" BOLTS AND 1/4" NYLON LOCK NUTS.

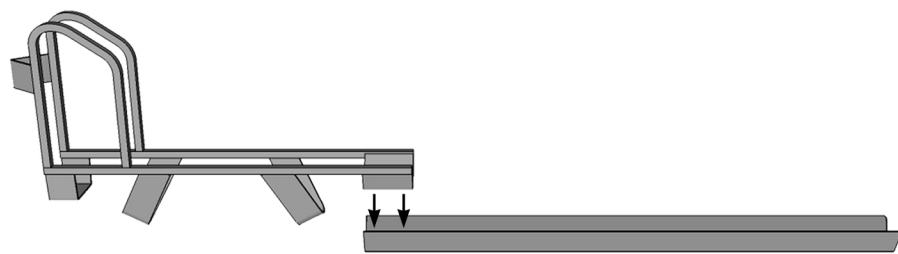


8.
 LOCATE THE LARGE HIGH AND LOW SLIDES. STARTING FROM THE END ALTERNATING LOW, HIGH, LOW... SLIDE THE SLIDES OVER THE TOP RAIL (SEE DIAGRAM).



9.
 SPACE THE SLIDES ACCORDING TO THE MODEL YOU RECIEVED ON THE TABLE ON PAGE 1 (PARTS PAGE), SECURE USING 1/4" x 3/4" BOLTS AND 1/4" NYLON LOCK NUTS.

YOUR RACK SHOULD NOW RESEMBLE THE DIAGRAM TO THE RIGHT.



10.
 TRAY SUB-ASSEMBLY
 LOCATE: A TRAY AND A STANCHION. REST THE STANCHION ON THE TRAY, ALIGNING THE HOLES ON THE STANCHION WITH THE HOLES IN THE TRAY. AS SHOWN IN THE DIAGRAM TO THE LEFT. SECURE USING 1/4" x 3/4" BOLTS AND 1/4" NYLON STOP NUTS. TIGHTEN FULLY.

CONDO WDD - ASSEMBLY INSTRUCTIONS



11.

TAKE ONE OF THE TRAYS AND ALIGN THE BACK HOLE ON THE STANCHION WITH THE HOLE ON THE SLIDE AND SECURE USING A 5/16" X 1/2" BOLT. REPEAT THIS PROCESS WITH ALL THE TRAYS ALTERNATING LOW, HIGH, LOW (CORRESPONDING TO THE SLIDE) DOWN THE LENGTH OF THE RAIL. DO THIS FOR BOTH RAILS ON RACKS WITH TRAYS ON BOTH TIERS.

12.

YOUR STRUCTURE SHOULD NOW BE COMPLETE. THE LAST STEP IS TO INSERT THE SAFETY STOPS INTO THE ENDS OF THE VERTICAL POSTS AND ADD THE SUPPLIED BLACK PLUGS INTO THE EXPOSED ENDS OF THE TUBE STEEL TO GIVE YOUR RACKING A FINISHED LOOK. YOUR RACK IS NOW COMPLETED AND SHOULD LOOK LIKE THE DIAGRAM BELOW.

